

QSA Double beam load cell 桥式传感器

Description 主要特性

Capacities 额定量程: (E_{max})
10,20,25,35,50,75,100klbs.

Accuracy 精度:
C3 OIML R60.

Output 额定输出:
2.0mV/V
Digital: 1,000,000d.

Execution standard 执行标准:
GB/T 7551-2008 Certificate
(eqv OIML R60)
Combined error 综合误差: 0.015%

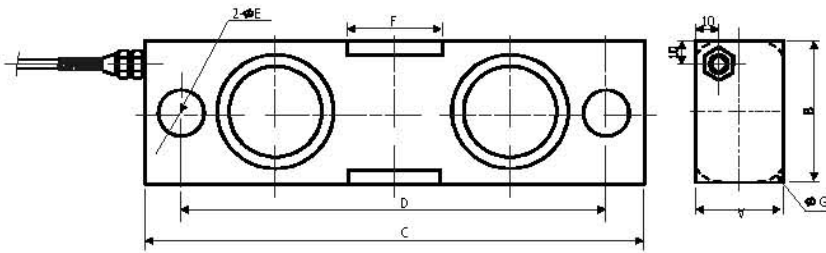
Material of elastomer 主要材料:
Alloy steel or stainless steel.
合金钢或不锈钢.

Sealed to IEC 529:
Protection grade: IP67 or IP68. Protection against total immersion in water for 30 minutes at a pressure corresponding to a 1 m head of water.



Dimensions 外形尺寸

(In mm. 1mm = 0.03937 inches)



CAP./SIZE	A	B	C	D	E	F	G
10~25klb	36.6	49.3	222.2	190.5	20.6	41.1	50.5
35klb	38.1	63.5	222.2	190.5	20.6	41.1	64.8
50~75klb	62	74.7	393.7	292.1	33.3	82.5	75.9
100klb	74.7	100.1	469.9	381.0	41.4	82.5	107.9

Circuit Diagram 电路图

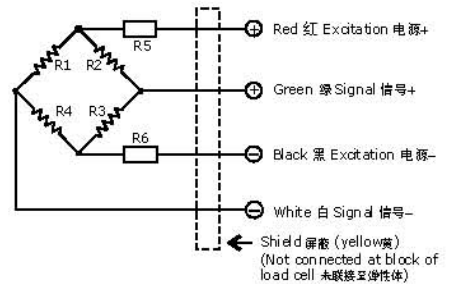
Electrical Termination 电路终端

4 Core cable standard lengths 电缆长度:
<= 35klbs: 6.0 m, >= 50klbs: 12.0m.

Diameter: ϕ 6

Connection 接线方式:

Refer to the following drawing.
参阅下面的图形.



Notice 注意:

Do not change the length of cable, or else, it will effect the sensitivity of load cell.

不要改变四蕊电缆的长度, 否则这将影响传感器的灵敏度.

Specification 技术参数

Item项目 \ Parameter参数	C3	Unit 单位
Rated load 额定载荷(E _{max}):	10,20,25,35,50,75,100	klbs
Maximal numbers of load cell verification Intervals 最大检定分度数 (N _{ic}):	3000	d
Minimum load cell verification intervals Intervals 最小检定分度值(V _{min}):	0.01	% of rated load
Rated output 额定输出 (C _n):	2.0±0.1%	mV/V
*Combined error 综合误差:	0.015	±% of rated output
Temperature effect on sensitivity 灵敏度温度影响 (Tk _c):	0.0012	±% of rated output/°C
Temperature effect on zero balance 零点温度影响 (Tk ₀):	0.0008	±% of rated output/°C
Zero balance 零点平衡:	1.0	±% of rated output
Input resistance(R _{ic}) 输入阻抗:	775±5	Ω (Ohms)
Output resistance(R _o) 输出阻抗:	702±2	Ω (Ohms)
Insulation resistance 绝缘电阻:	≥5000	MΩ (Mega-Ohms)
Safe overload 安全过载:	150	% of rated capability
Ultimate overload 极限过载:	300	% of rated capability
Operating temperature range 工作温度范围:	-20~+70/-20~+160	°C / °F
Recommend excitation 推荐工作电压:	8~15	V (DC or AC)
Maximum excitation 最大工作电压:	24	V (DC or AC)
Material of elastomer 弹性体材料:	Alloy steel 合金钢 / Stainless steel 不锈钢	
Protection class 防护等级:	IP67/IP68	

Copyright 版权声明

Modifications reserved

All details describe our products in general from only.

They are not to be understood as express warranty and do not constitute liability whatsoever.

版权和声明

此数据表内的所有技术数据均来自于本公司的常规产品; 本公司保留更改和提高产品性能所做的必要的修改, 并无义务事先通知; 此数据表内的所有数据或条款并不为索赔, 保证, 保修等法律责任; 未经本公司的书面同意, 不得复制此页面中的任何文字或图片.

benui
benui electric

宁波本原电子有限公司

地址: 宁波经济技术开发区东海春晓园区洋沙山西9路18号

Ningbo Benui electric Co., LTD.

Add: No.18, YangShaShan west 9 Road, ChunXiao,

Ningbo Economic & Technical Development Zone, China

Tel: +86-574-8680 6868 0574-8680 6565

Fax: +86-574-8680 6862 0574-8680 6566

E-mail: sales@benui.com benui@benui.com

http://www.benui.com www.loadcell.cn

中文网站 http://www.benui.com.cn www.benui.cn

The data for deviation of synthesis error, Tk₀, Tk_c are typical values. The sum of these data meets the requirements according to OIML R60.

综合误差为理论值, 它最终将符合OIML R60中的相应条款的要求.