

BA629

Single Point Load Cell

Description

Capacities: (Emax)

50,100,200,300,500kg

Rated output:

2.0mV/V

Digital:1,000,000d

Grade/Accuracy:

C3 OIML R60

Material of elastomer:

Aluminum / Alloy or SS

Execution standard:

GB/T 7551-2008 Certificate

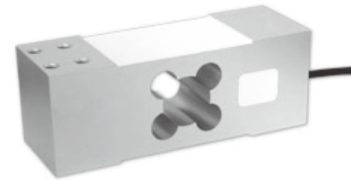
(eqv OIML R60)

Combined error: 0.015%

Sealed to IEC 529:

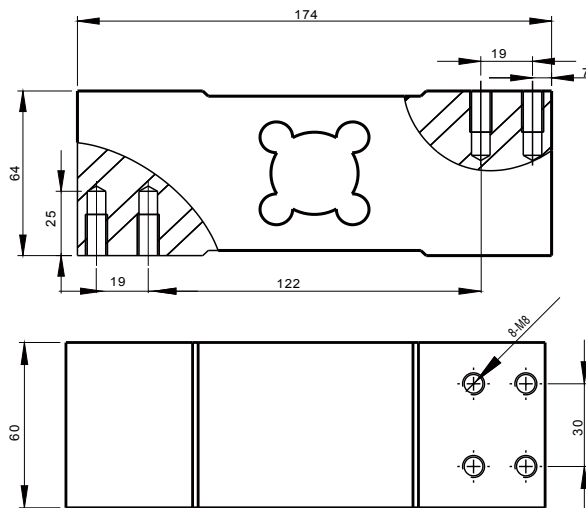
Protection grade: IP66.

Enclosure is sprayed from all practicable directions with a stream of water at 100L/min from a 12.5mm nozzle from a distance of 2.5 to 3m. Test time=1min/m of enclosure surface area to be sprayed,3min minimum.



Dimensions

(In mm, 1mm=0.03937inches)



Circuit Diagram

Electrical Termination

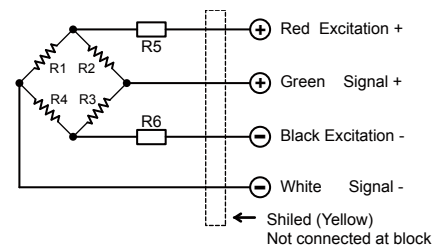
4 Cores cable standard lengths:

2m

Cable Diameter:Φ5

Connection:

Refer to the following drawing:



Note:

6 Cores cable is optional.

Do not change the length of cable, or lese, it will effect the sensitivity of load cell.

Specification

| Item/Parameter | C3 | Unit |
|---|------------------------|----------------------|
| Rated load(Emax): | 50,100,200,300,500 | kg |
| Maximal numbers of loadcell verification intervals (Nic): | 3000 | d |
| Minimum number of loadcell verification intervals (Vmin) | 0.01 | % of rated load |
| Rated output (Cn): | 2.0 ± 5% | mV/V |
| *Combined error: | 0.015 | % of rated output |
| Temperature effect on sensitivity (Tkc): | 0.0012 | % of rated output/°C |
| Temperature effect on zero balance (Tk0): | 0.0008 | % of rated output/°C |
| Zero balance: | 1.0 | % of rated output |
| Input resistance (Rlc): | 385 | Ω(Ohms) |
| Output resistance (Ro): | 351 | Ω(Ohms) |
| Insulation resistance: | ≥5000 | MΩ(Mega-Ohms) |
| Safe overload: | 150% | % of rated capacity |
| Operating temperature range: | -20~+70 | °C |
| Recommend excitation: | 5~12 | V(DC or AC) |
| Maximum excitation: | 18 | V(DC or AC) |
| Material of elastomer: | Aluminum / Alloy or SS | |
| Protection class: | IP65/IP66 | |

Copyright

Modifications reserved

All details describe our products in general from only.

They are not to be understood as express warranty and do not constitute liability whatsoever.

The company reserves the right to make amendments to this datasheet information without prior notice.

No part of this datasheet, including the texts, photographs, may be reproduced or transmitted without the express written permission of Ningbo Maken Electric Co.,Ltd.

MAKEN
MAKEN ELECTRIC

Ningbo Maken Electric Co.,Ltd.

Add: 28 Moju Road,WangAi industry park,
Beilun,Ningbo City, China ZIP:315800

Tel: +86-574-8680 6565

Fax:+86-574-8609 0607

E-mail: sales@makenie.com

maken.bowey@hotmail.com

http://www.makenie.com www.maken.biz

The data for deviation of synthesis error,TK0,Tkc are typical values. The sum of these data meets the requirements according to OIML R60