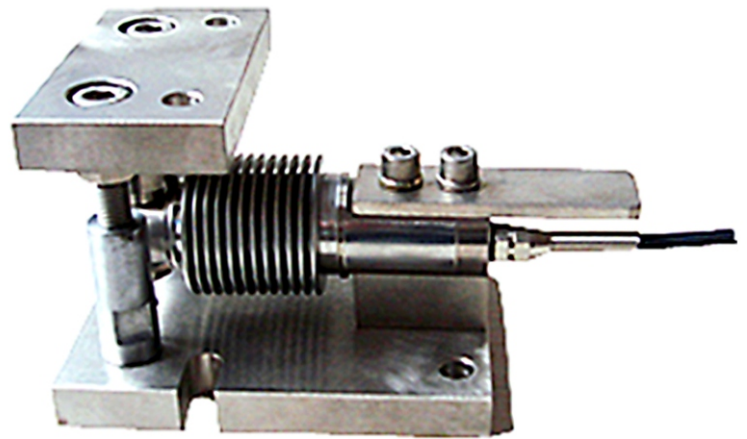


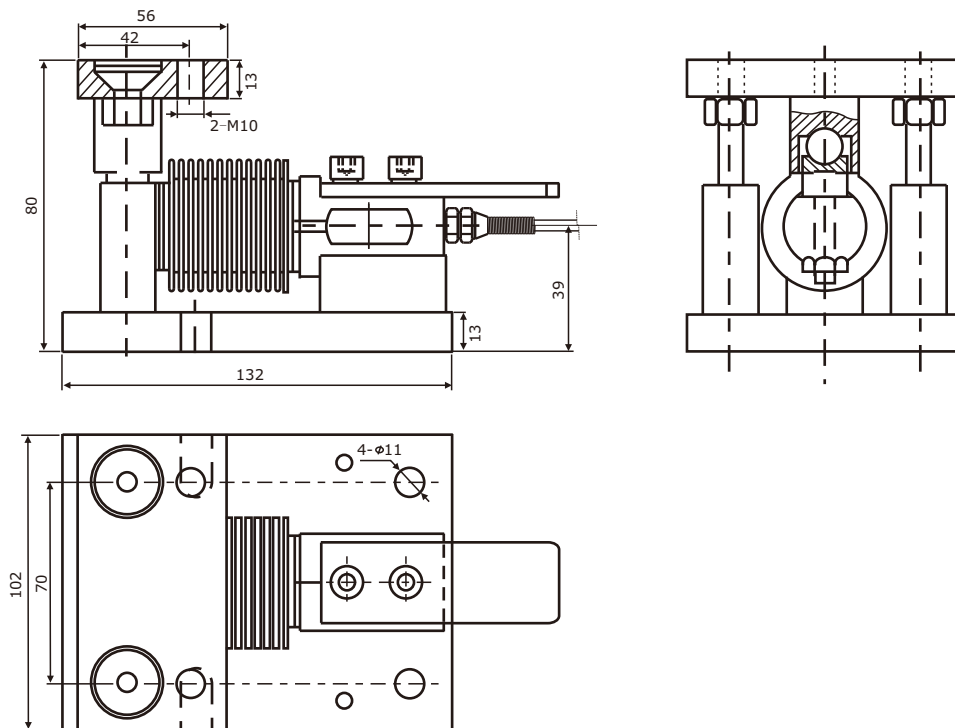
BWGA-M series

Description

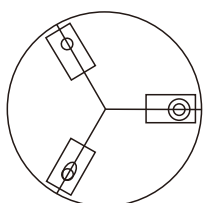
- Easy installation and suitable for hopper scale, belt scale, blending scale
- Capacities: 10kg~250kg
- 3000 divisions OIML-R60
- Measuring element from alloy steel
- Protected against corrosion by nickel-plated /chrome-plated
- Available in stainless steel
- Hermetically sealed, fully welded
- Protected against humidity IP67 / IP68
- Available in high temperature version (optional)
- Available in ATEX version (optional)
- Optional version with built-in lighting surge arresters




Dimensions (In mm)

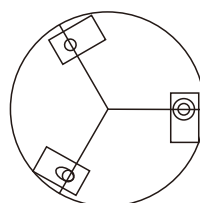


Installation




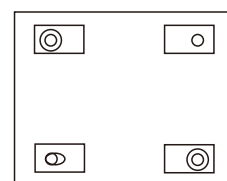
Radial mouting

 Float module



Cutting mouting

 Semi-float module



Rectang mouting

 Fixed module

Specification

	Load cell specification	Units
Maximum capacity (E _{max})	10~250	Kg
Minimum dead load (E _{min})	0	0%*E _{max}
Maximal numbers of verification intervals (n _{max})	3000	n.a
Minimum load cell verification intervals (V _{min})	0.01	% of rated load
Rated output (C _n):	2.0±0.1%	mV/V
*Combined error:	0.015	±% of rated output
Temperature effect on sensitivity (T _{kc}):	0.0012	±% of rated output/°c
Temperature effect on zero balance (T _{k0}):	0.0008	±% of rated output/°c
Zero balance:	1.0	±% of rated output
Input resistance(R _{ic}):	385±5	Ω (Ohms)
Output resistance(R _o):	350±2	Ω (Ohms)
Insulation resistance:	≥5000	MΩ (Mega-Ohms)
Safe overload:	150	% of rated capability
Ultimate overload:	300	% of rated capability
Operating temperature range:	-20~+70/-20~+160	°C/°F
Recommend excitation:	10~12	V DC
Maximum excitation:	15	V DC
Material of elastomer:	Alloy steel / Stainless steel	
Protection class:	IP67/IP68	

Wiring

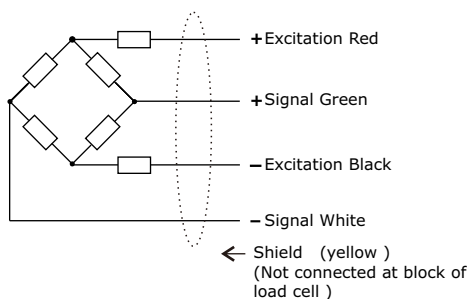
The load cell is provided with a shield, 4 conductor cable.

Cable lengths: 3m

Cable diameter: φ6mm

Wire connection:

Refer to the drawing on below.



Notice:

Do not change the length of cable, otherwise it will effect the sensitivity of load cell.

benüi
benüi electric

Ningbo Benüi Electric Co.,Ltd.

Add:No.18,YangShaShan west 9 Road, ChunXiao,
Ningbo Economic&Technical Development Zone,China
ZIP:315800

Tel: +86-574-8680 6868 0574-8680 6565

Fax: +86-574-8680 6862 0574-8680 6866

E-mail: sales@benüi.com benüi@benüi.com

http://www.benüi.com www.loadcell.cn